





TS

Worklist: 5420

<u>LAB CASE</u>	<u>ITEM</u>	<u>ITEM TYPE</u>	<u>DESCRIPTION</u>	
M2021-4752	2	BCK	AM 25/AM 26 Blood MultiDrug/THC Screen by LC-QQQ	
M2021-4805	1	BCK	AM 25/AM 26 Blood MultiDrug/THC Screen by LC-QQQ	
M2021-4818	1	BCK	AM 25/AM 26 Blood MultiDrug/THC Screen by LC-QQQ	
M2021-4866	1	BCK	AM 25/AM 26 Blood MultiDrug/THC Screen by LC-QQQ	
M2021-4876	1	BCK	AM 25/AM 26 Blood MultiDrug/THC Screen by LC-QQQ	
M2021-4891	2	BCK	AM 25/AM 26 Blood MultiDrug/THC Screen by LC-QQQ	
M2021-4910	1	BCK	AM 25/AM 26 Blood MultiDrug/THC Screen by LC-QQQ	
P2021-3152	2	BCK	AM 25/AM 26 Blood MultiDrug/THC Screen by LC-QQQ	
P2021-3607	2	BCK	AM 25/AM 26 Blood MultiDrug/THC Screen by LC-QQQ	
P2021-3675	1	BCK	AM 25/AM 26 Blood MultiDrug/THC Screen by LC-QQQ	
P2021-3742	1	BCK	AM 25/AM 26 Blood MultiDrug/THC Screen by LC-QQQ	
P2021-3760	1	BCK	AM 25/AM 26 Blood MultiDrug/THC Screen by LC-QQQ	
P2021-3798	1	BCK	AM 25/AM 26 Blood MultiDrug/THC Screen by LC-QQQ	
P2021-3800	1	BCK	AM 25/AM 26 Blood MultiDrug/THC Screen by LC-QQQ	
P2021-3803	1	BCK	AM 25/AM 26 Blood MultiDrug/THC Screen by LC-QQQ	
P2021-3809	1	BCK	AM 25/AM 26 Blood MultiDrug/THC Screen by LC-QQQ	
P2021-3811	1	BCK	AM 25/AM 26 Blood MultiDrug/THC Screen by LC-QQQ	
P2021-3824	1	BCK	AM 25/AM 26 Blood MultiDrug/THC Screen by LC-QQQ	
P2021-3825	1	BCK	AM 25/AM 26 Blood MultiDrug/THC Screen by LC-QQQ	
P2021-3826	1	BCK	AM 25/AM 26 Blood MultiDrug/THC Screen by LC-QQQ	
P2021-3848	1	BCK	AM 25/AM 26 Blood MultiDrug/THC Screen by LC-QQQ	

Worklist: 5420

TS

<u>LAB CASE</u>	<u>ITEM</u>	<u>ITEM TYPE</u>	<u>DESCRIPTION</u>	
P2021-3850	1	BCK	AM 25/AM 26 Blood MultiDrug/THC Screen by LC-QQQ	
P2021-3855	2	BCK	AM 25/AM 26 Blood MultiDrug/THC Screen by LC-QQQ	
P2021-3856	1	BCK	AM 25/AM 26 Blood MultiDrug/THC Screen by LC-QQQ	
P2021-3859	1	BCK	AM 25/AM 26 Blood MultiDrug/THC Screen by LC-QQQ	

AM# 25: Multi-Drug Screen in Blood and Urine by LC-MS/MS

Extraction Date: 12-01-2021

Plate lot#: IDP-120-210611

Mobile phase A: 10mM Amm Form
Instant Buffer I

Blank Blood Lot: Lampire 20L20725

LCMS-QQQ ID: 069901

Analyst: Tamara Salazar

Plate Re-Test Date: 12/11/2021

Mobile phase B: 0.1% Formic Acid in MeOH
Ethyl Acetate LC Methanol

Column: Phenomenex Phenyl Hexyl (4.6x50mm, 2.6um)

Pre-Analytic:

- 1. Check levels of mobile phases and needle wash refill as needed. Ensure waste is not full.
- 2. Ensure correct column is installed and begin mobile phase flow allow to equilibrate ~ 30 minutes.

Analytic:

- 1. Remove standards, plate, controls, and samples from cold storage. Allow to reach room temperature.
- 2. Using a calibrated pipette, pipette **250µL blood and urine** (if applicable) into wells of analytical (standards) plate.
Pipette ID: 42
- 3. Place on shaking incubator at ambient temp., 900rpm for 15 minutes.
- 4. Pipette **250µL 0.5 M ammonium hydroxide** in wells of analytical plate.
- 5. Place on shaking incubator at ambient temp., 900rpm for 15 minutes.
- 6. Transfer **200-450µL of blood+base and urine+base (if applicable)** mixture to corresponding wells of SLE+ plate.
Amount transferred: 300uL
- 7. Apply positive pressure for approx. 10-15 seconds (or until no liquid remains on top of sorbent).
(Load at 85-100 PSI- Selector to the right).
- 8. Wait 5 minutes.
- 9. Add **900uL ethyl acetate.**
- 10. Wait 5 minutes.
- 11. Apply positive pressure for approx. 15 seconds. *(10-15 PSI- Selector to the left).*
- 12. Add **900uL ethyl acetate.**
- 13. Wait 5 minutes.
- 14. Apply positive pressure for approx. 15 seconds. *(10-15 PSI- Selector to the left).*
- 15. Remove plate containing eluate. Place on SPE Dry and evaporate to dryness at approx. 35°C. If run contains urine, add 50µL 1% HCl in MeOH to wells and place plate cover on plate before drying.
- 16. Reconstitute in **100µL 20% LC MeOH** and heat seal plate with foil. Place in autosampler and run worklist.

Post-Analytic

- 1. Open quantitation software and create a new quantitation batch.
- 2. Make necessary changes to integration limits
- 3. Evaluate samples, S/N of primary transition >5 and S/N of secondary transition >3 or evaluation of peak symmetry and resolution. Within +/- 2% or 0.1 min RT of administrative control. Calculated concentration of 5 or greater or 2-5 for discretionary range.
- 4. Did all QCs pass for each analyte? If no, describe issue in comments (below).
- 5. Central File Packet to include: LIMS Worklist, Method Checklist, Calibration and Control Reports

COMMENTS:

	1	2	3	4	5	6	7	8	9	10	11	12
A	IS + Cal. 1	M2021-4891-2	P2021-3800-1	P2021-3850-1	IS + Sample	IS + Sample	IS + Sample	IS + Sample	IS + Sample	IS + Sample	IS + Sample	IS + Sample
B	IS + Cal. 1	M2021-4910-1	P2021-3803-1	P2021-3855-2	IS + Sample	IS + Sample	IS + Sample	IS + Sample	IS + Sample	IS + Sample	IS + Sample	IS + Sample
C	Neg Blood	P2021-3152-2	P2021-3809-1	P2021-3856-1	IS + Sample	IS + Sample	IS + Sample	IS + Sample	IS + Sample	IS + Sample	IS + Sample	IS + Sample
D	M2021-4752-2	P2021-3607-2	P2021-3811-1	P2021-3859-1	IS + Sample	IS + Sample	IS + Sample	IS + Sample	IS + Sample	IS + Sample	IS + Sample	IS + Sample
E	M2021-4805-1	P2021-3675-1	P2021-3824-1	IS + Sample	IS + Sample	IS + Sample	IS + Sample	IS + Sample	IS + Sample	IS + Sample	IS + Sample	IS + Sample
F	M2021-4818-1	P2021-3742-1	P2021-3825-1	IS + Sample	IS + Sample	IS + Sample	IS + Sample	IS + Sample	IS + Sample	IS + Sample	IS + Sample	IS + Sample
G	M2021-4866-1	P2021-3760-1	P2021-3826-1	IS + Sample	IS + Sample	IS + Sample	IS + Sample	IS + Sample	IS + Sample	IS + Sample	IS + Sample	IS + Cal. 1
H	M2021-4876-1	P2021-3798-1	P2021-3848-1	IS + Sample	IS + Sample	IS + Sample	IS + Sample	IS + Sample	IS + Sample	IS + Sample	IS + Sample	IS + Cal. 1

All wells to contain 60 µl of residual DMSO

TS



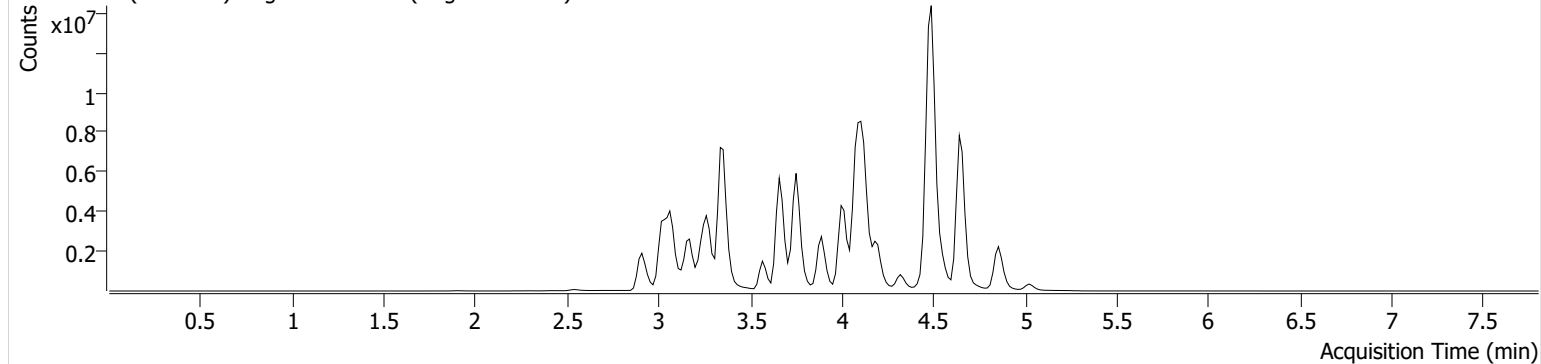
AM #25 Multi-Drug Screen Results

Batch results D:\MassHunter\Data\2021\AM 25-26\120121 AM 25 26 TS\QuantResults\AM 25 TS.batch.bin
Calibration Last Update 12/2/2021 3:57:47 PM

Instrument	Falco (069901)	Data File	Negative Blood.d
Type	Sample	Sample	Negative Blood
Acq. Method	AM 25 MDS.m	Operator	Tamara Salazar
Sample Position	P6-C1	Comment	
Injection Volume	5		
Acq. Date-Time	12/1/2021 8:35:55 PM		
Sample Info.			

Sample Chromatogram

+ TIC MRM (** -> **) Negative Blood.d (Negative Blood)



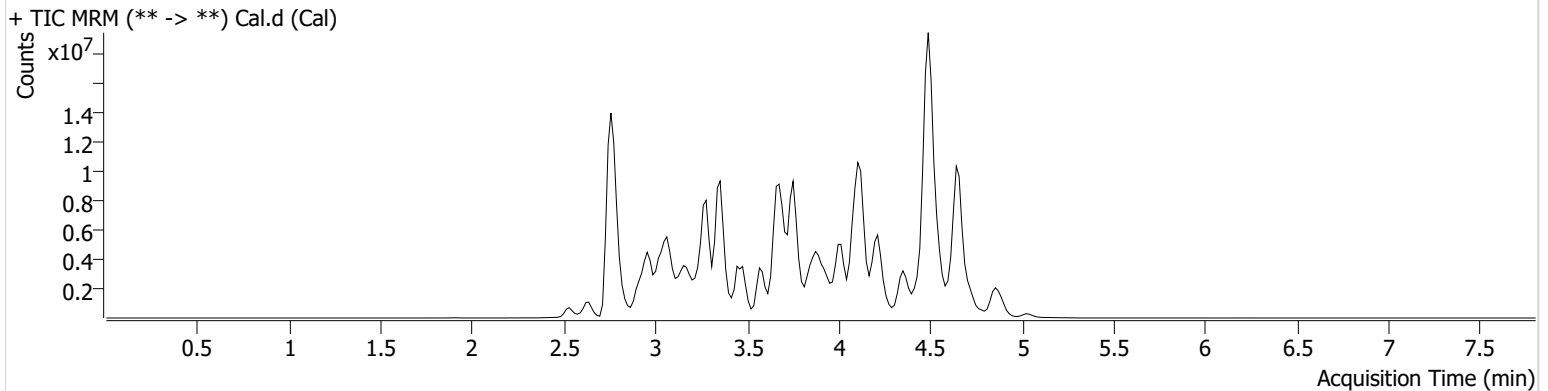


AM #25 Multi-Drug Screen Results

Batch results D:\MassHunter\Data\2021\AM 25-26\120121 AM 25 26 TS\QuantResults\AM 25 TS.batch.bin
Calibration Last Update 12/2/2021 3:57:47 PM

Instrument	Falco (069901)	Data File	Cal.d
Type	Cal	Sample	Cal
Acq. Method	AM 25 MDS.m	Operator	Tamara Salazar
Sample Position	P6-A1	Comment	
Injection Volume	5		
Acq. Date-Time	12/1/2021 8:27:21 PM		

Sample Chromatogram



Name	RT	Resp.	S/N	S/N	ISTD Resp.	Calc. Conc.
6-MAM	3.153	48218	29540.74	7246.01	1565751	10.0000
7-aminoclonazepam	3.587	676275	185.76	502.46	4528662	10.0000
7-aminoflunitrazepam	3.786	2028931	671.42	467.53	4528662	10.0000
Acetyl Fentanyl	4.106	33682	66.08	26222.22	24675410	10.0000
Acetyl Norfentanyl	2.947	291121	543.76	1140.86	24675410	10.0000
a-hydroxyalprazolam	4.505	245028	172.19	126.96	4528662	10.0000
alpha-hydroxymidazolam	4.596	1142715	129.86	391.05	4528662	10.0000
Alpha-PHP	3.960	1630754	11622.16	2782.09	24675410	10.0000
alpha-PVP	3.685	2823430	357.69	238.64	6311892	10.0000
Alprazolam	4.616	2473868	838.21	1017.99	21858591	10.0000
Amitriptyline	4.528	52308	5.48	10.41	249698	10.0000
Amphetamine	2.951	1484773	587.79	278.87	6311892	10.0000
Benzoylcegonine	3.387	194022	196303.08	62.54	282857	10.0000
Brompheniramine	4.107	10560	119.97	1053.13	15985295	10.0000
Buprenorphine	5.050	170537	55238.58	17856.45	702151	10.0000
Bupropion	3.930	1846409	338.69	219.96	7684064	10.0000
Carbamazepine	4.223	10856913	1378.65	992.78	671284	10.0000
Carisoprodol	4.206	1189238	199667.87	298.96	6753609	10.0000
Chlordiazepoxide	4.725	1029624	293.07	484.01	21858591	10.0000
Chlorpheniramine	4.019	1067281	3051.75	18.80	15985295	10.0000
Citalopram	4.121	756144	121.11	198346.31	15985295	10.0000
Clomipramine	4.738	73027	38611.71	28525.50	15985295	10.0000
Clonazepam	4.430	1428673	2853.02	5146.48	21858591	10.0000
Clonazolam	4.365	1579668	1103689.52	218848.05	21858591	10.0000
Cocaethylene	3.876	3452067	2496795.99	493264.08	19411115	10.0000
Cocaine	3.678	3285279	170.11	340.15	19411115	10.0000
Codeine	3.125	305600	142671.68	1622.08	8438593	10.0000
Cyclobenzaprine	4.436	101339	137.55	7.84	249698	10.0000
Desipramine	4.421	246871	129.52	135.10	249698	10.0000
Dextromethorphan	4.159	276530	72022.71	139.49	1476867	10.0000
Dextrorphan	3.435	1348255	121.68	1279760.74	1476867	10.0000
Diazepam	4.849	987242	441.15	677.83	21858591	10.0000
Dihydrocodeine	2.957	900117	288.88	333.56	8438593	10.0000
Diphenhydramine	4.098	2070802	61914.50	919.24	15985295	10.0000

TS



AM #25 Multi-Drug Screen Results

Name	RT	Resp.	S/N	S/N	ISTD Resp.	Calc. Conc.
Doxepin	4.250	173029	99.67	20.23	5110866	10.0000
Doxylamine	3.696	6052435	2172607.67	1376577.86	1476867	10.0000
EDDP	4.127	852375	165.97	103843.63	2522592	10.0000
Estazolam	4.541	5438832	1582.20	544.51	21858591	10.0000
Etizolam	4.642	340495	154818.66	701732.55	21858591	10.0000
Fentanyl	4.335	15318	9.79	8815.86	1503561	10.0000
Flualprazolam	4.490	686605	857026.05	414481.86	21858591	10.0000
Flunitrazepam	4.554	2538256	1119.31	691195.58	21858591	10.0000
Fluoxetine	4.355	76502	88602.09	11.84	98554	10.0000
Flurazepam	4.395	668368	426034.08	118670.54	21858591	10.0000
Hydrocodone	3.278	1187615	6072.90	1522.72	8438593	10.0000
Hydromorphone	2.807	738132	22640.09	2987.62	201905	10.0000
Imipramine	4.481	249330	303.18	119.92	249698	10.0000
Ketamine	3.853	3118141	545.83	118.35	9931296	10.0000
Lamotrigine	3.636	265781	112.63	189.85	15985295	10.0000
Levamisole	3.209	2258111	7147.78	267.16	19411115	10.0000
Levetiracetam	2.644	1127424	1498.12	909.69	15985295	10.0000
Lorazepam	4.429	479892	193.28	39.29	21858591	10.0000
Maprotiline	4.528	28506	5.68	∞	249698	10.0000
MDA	3.056	1043633	211.32	126.50	10719511	10.0000
MDEA	3.286	1910798	138.98	461.74	10719511	10.0000
MDMA	3.148	2608690	1631.28	404.83	10719511	10.0000
Meperidine	3.713	1210796	146.53	402.75	1476867	10.0000
Meprobamate	3.654	579304	315635.29	427.95	6753609	10.0000
Methadone	4.446	889694	375.35	99.25	2522592	10.0000
Methamphetamine	3.058	1893573	1191.87	149.08	10719511	10.0000
Methocarbamol	3.560	489826	370.21	246.83	2522592	10.0000
Methylphenidate	3.592	3897352	482.01	330.88	6624452	10.0000
Metoprolol	3.481	368094	358.13	236258.18	1476867	10.0000
Midazolam	4.781	458502	1458.72	345.71	21858591	10.0000
Mirtazapine	4.360	1042369	712276.12	1431.31	1476867	10.0000
Mitragynine	4.379	66232	29874.70	112638.04	1476867	10.0000
Morphine	2.594	191651	∞	261.20	201905	10.0000
Norbuprenorphine	3.902	10010	52.15	22432.78	702151	10.0000
Nordiazepam	4.682	1297404	575563.59	800.08	21858591	10.0000
Norfentanyl	3.361	4123973	8741.62	1619.92	24675410	10.0000
Norhydrocodone	3.020	139040	27.32	46.44	201905	10.0000
Norketamine	3.931	593314	410.61	4951.02	9931296	10.0000
Normeperidine	3.638	1055871	386.31	126.18	15985295	10.0000
Noroxycodone	2.957	1077008	479.35	288.35	9931296	10.0000
Nortriptyline	4.468	36916	173.74	10.96	249698	10.0000
O-desmethyl-tramadol	2.976	5902699	13496.44	823.31	15985295	10.0000
Olanzapine	4.015	171463	307166.89	3130.60	671284	10.0000
Oxazepam	4.511	2253822	345.09	135.57	11553168	10.0000
Oxycodone	3.093	2337589	524.61	713.88	9931296	10.0000
Oxymorphone	2.531	988395	985.63	1263721.81	201905	10.0000
Paroxetine	4.397	11748	14.20	2536.20	98554	10.0000
Phenazepam	4.626	2044999	151615.29	632.65	21858591	10.0000
Phencyclidine	3.975	1763306	124.72	183.85	1476867	10.0000
Phentermine	3.196	465484	319.85	21.22	6624452	10.0000
Phenytoin	4.114	1270664	1233.27	343.50	671284	10.0000
Promethazine	4.480	246909	117.88	17.01	15985295	10.0000
Pseudoephedrine	2.767	45498293	1448.19	829.30	10719511	10.0000
Quetiapine	4.701	1468670	1860660.97	709.47	38251493	10.0000
Sertraline	4.632	17571	13259.88	42.72	98554	10.0000
Sufentanil	4.747	10735	7402.88	8.47	24675410	10.0000
Tapentadol	3.470	2997538	1650.05	31377.95	9931296	10.0000
Temazepam	4.664	3853792	706.76	121.98	21858591	10.0000
Tramadol	3.481	5070966	5796039.89	32.86	15985295	10.0000
Trazodone	4.885	1188208	668.21	394.85	5110866	10.0000

Cal

TS



AM #25 Multi-Drug Screen Results

Name	RT	Resp.	S/N	S/N	ISTD Resp.	Calc. Conc.
Venlafaxine	3.849	2866064	778.80	362.41	98554	10.0000
Zaleplon	4.356	2655108	2928279.32	624.59	38251493	10.0000
Zolpidem	4.493	7917188	4309770.48	1582.84	38251493	10.0000
Zopiclone	4.456	631913	474031.66	201698.06	2874661	10.0000

AM# 26: Screening of THC and Metabolites in Blood and Urine by LC-MS/MS

Extraction Date: 12-01-2021

Analyst: Tamara Salazar

Plate lot#: IDP-108-3-211018

Plate Re-Test Date: 04-18-2022

Mobile phase A: 0.1% Formic Acid in LCMS Water

Mobile phase B: 0.1% Formic acid in Acetonitrile

Blank Blood Lot: Lampire 20L20725

Column: Phenomenex Phenyl Hexyl (4.6x50mm, 2.6um)

LCMS-QQ ID: 069901

Pre-Analytic:

- 1. Check levels of mobile phases and needle wash refill as needed. Ensure waste is not full.
- 2. Ensure correct column is installed and begin mobile phase flow allow to equilibrate ~ 30 minutes.

Analytic:

- 1. Remove standards, plate, controls, and samples from cold storage. Allow to reach room temperature.
- 2. Using a calibrated pipette, add **1000µl blood and urine (if applicable) (calibrated pipette)** into the appropriate wells of analytical (standards) plate. **Pipette ID: 42**
- 3. Place on shaking incubator at ambient temp., 900rpm for 15 minutes.
- 4. Pipette **500µL 0.1% formic acid in water blood sample, 500 µL saturated phosphate buffer in urine** in wells of analytical plate.
- 5. Place on shaking incubator at ambient temp., 900rpm for 15 minutes.
- 6. Transfer **700-800µL of blood+acid or urine+acid** mixture to corresponding wells of SLE+ plate. Amount transferred: 750uL
- 7. Apply positive pressure for approx. 10-15 seconds (or until no liquid remains on top of sorbent). **(Load at 85-100 PSI- Selector to the right)**
- 8. Wait 5 minutes.
- 9. Add **2.25mL MTBE. (Add in 3 increments of 750uL)**
- 10. Wait 5 minutes.
- 11. Apply positive pressure for approx. 15 seconds. **(10-15 PSI- Selector to the left).**
- 12. Add **2.25mL Hexane. (Add in 3 increments of 750uL)**
- 13. Wait 5 minutes.
- 14. Apply positive pressure for approx. 15 seconds. **(10-15 PSI- Selector to the left).**
- 15. Remove plate containing eluate. Place on SPE Dry and evaporate to dryness at approx. 35°C.
- 16. Reconstitute in **100µL 100% MeOH** and heat seal plate with foil. Place in autosampler and run worklist.

Post-Analytic

- 1. Create batch and process data.
- 2. Make any necessary integration changes, R² values ≥0.98 for each analyte
- 3. RT +/- 2% or 0.100 min, whichever is greater
- 4. Confirmation testing on case samples with a response for THC and OH-THC of 3ng/mL or greater and/or Carboxy-THC at 10ng/mL or greater (analyst discretion between 5-10ng/mL) may be pursued.
- 5. Did all QCs pass for each analyte? (if not, describe in comments section)
- 6. Central File Packet to include: LIMS Worklist, Method Checklist, Calibration and Control Reports

COMMENTS: THC-OH: 3-100

TS

	1	2	3	4	5	6
A	IS + Cal. 1	IS + QC_1	M2021-4910-1	P2021-3803-1	P2021-3855-2*	IS + QC_1
B	IS + Cal. 2	Neg Blood	P2021-3152-2	P2021-3809-1*	P2021-3856-1	IS + Cal. 7
C	IS + Cal. 3	M2021-4752-2	P2021-3607-2	P2021-3811-1	P2021-3859-1	IS + Cal. 6
D	IS + Cal. 4	M2021-4805-1	P2021-3675-1	P2021-3824-1	M2021-4891-2	IS + Cal. 5
E	IS + Cal. 5	M2021-4818-1	P2021-3742-1	P2021-3825-1	P2021-3809-1	IS + Cal. 4
F	IS + Cal. 6	M2021-4866-1	P2021-3760-1	P2021-3826-1	P2021-3855-2	IS + Cal. 3
G	IS + Cal. 7	M2021-4876-1	P2021-3798-1	P2021-3848-1	IS + Sample	IS + Cal. 2
H	IS + QC_1	M2021-4891-2*	P2021-3800-1	P2021-3850-1	IS + QC_1	IS + Cal. 1

All wells to contain 100 µl of residual DMSO

*Sample moved during analytical step 6 due to a blood clot.

TS

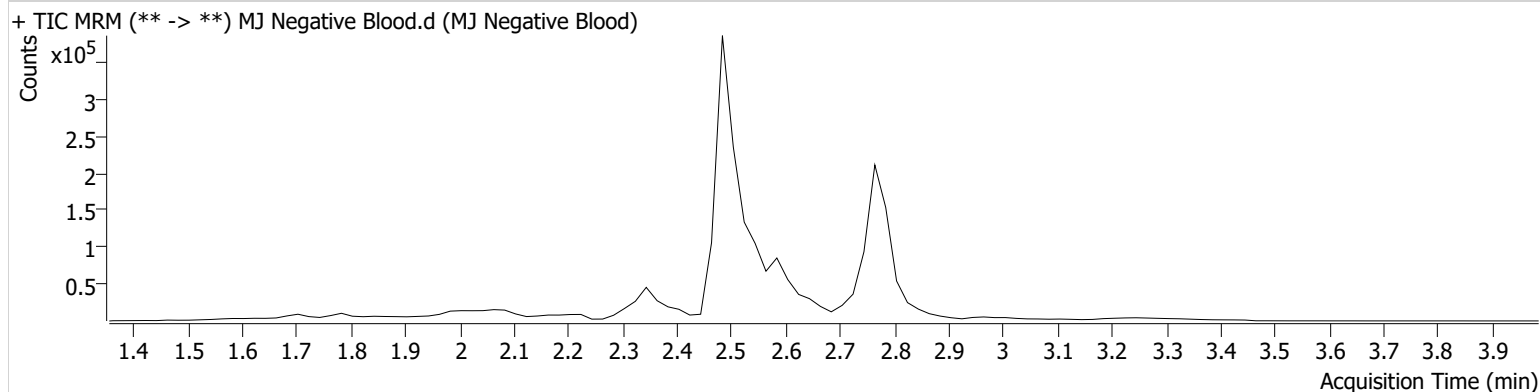


AM #26 Cannabinoids Screen Results

Batch results D:\MassHunter\Data\2021\AM 25-26\120121 AM 25 26 TS\QuantResults\AM 26 TS.batch.bin
Calibration Last Update 12/2/2021 4:00:26 PM

Instrument	Falco (069901)	Data File	MJ Negative Blood.d
Type	Sample	Sample	MJ Negative Blood
Acq. Method	AM 26 THCS.m	Operator	Tamara Salazar
Sample Position	P5-B2	Comment	
Injection Volume	10		
Acq. Date-Time	12/1/2021 4:46:38 PM		
Sample Info.			

Sample Chromatogram



Name	RT	Resp.	ISTD Resp.	Final Conc.	
THC-OH	2.514	5085	742567	1.9139 ng/ml	Low

TS

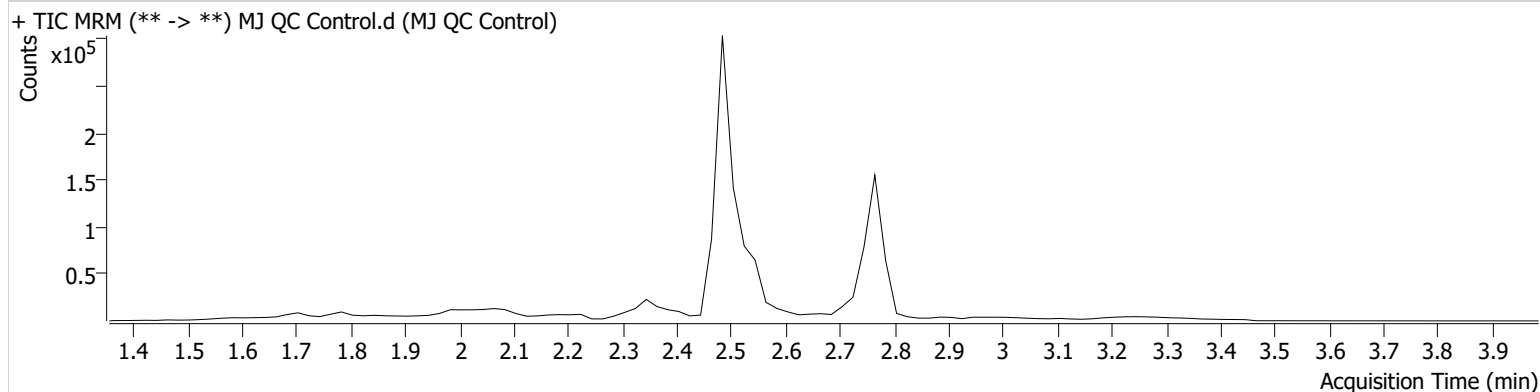


AM #26 Cannabinoids Screen Results

Batch results D:\MassHunter\Data\2021\AM 25-26\120121 AM 25 26 TS\QuantResults\AM 26 TS.batch.bin
Calibration Last Update 12/2/2021 4:00:26 PM

Instrument	Falco (069901)	Data File	MJ QC Control.d
Type	Sample	Sample	MJ QC Control
Acq. Method	AM 26 THCS.m	Operator	Tamara Salazar
Sample Position	P5-H1	Comment	
Injection Volume	10		
Acq. Date-Time	12/1/2021 4:33:28 PM		

Sample Chromatogram



Name	RT	Resp.	ISTD Resp.	Final Conc.
THC	2.819	303	5369	7.6746 ng/ml
THC-COOH	2.547	23194	99738	15.3043 ng/ml
THC-OH	2.494	6866	532422	5.0596 ng/ml

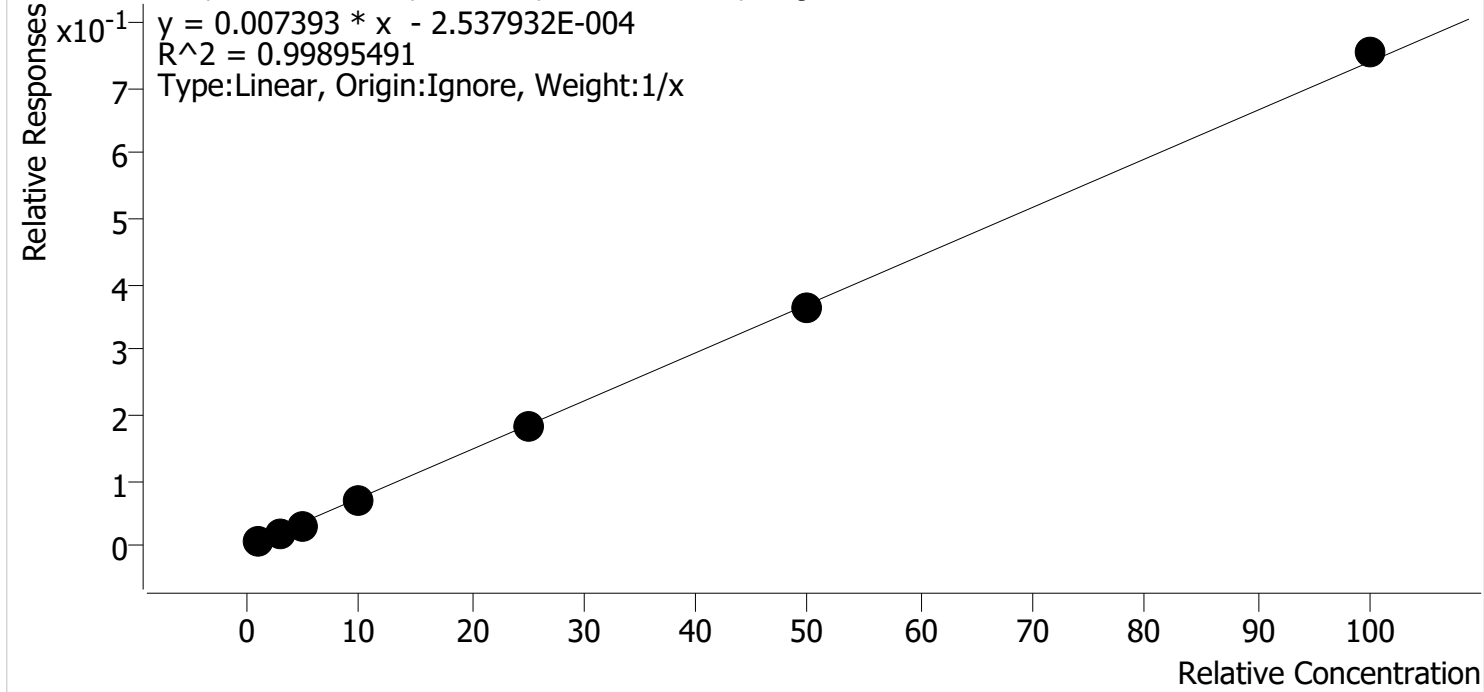
TS



AM #26 Cannabinoids Screen Calibration Curve Report

Batch results D:\MassHunter\Data\2021\AM 25-26\120121 AM 25 26 TS\QuantResults\AM 26 TS.batch.bin
Last Cal. Update 12/2/2021 4:00 PM
Analyst Name ISP\datastor
Analyte THC **Internal Standard** THC-D3

THC - 7 Levels, 7 Levels Used, 7 Points, 7 Points Used, 0 QCs



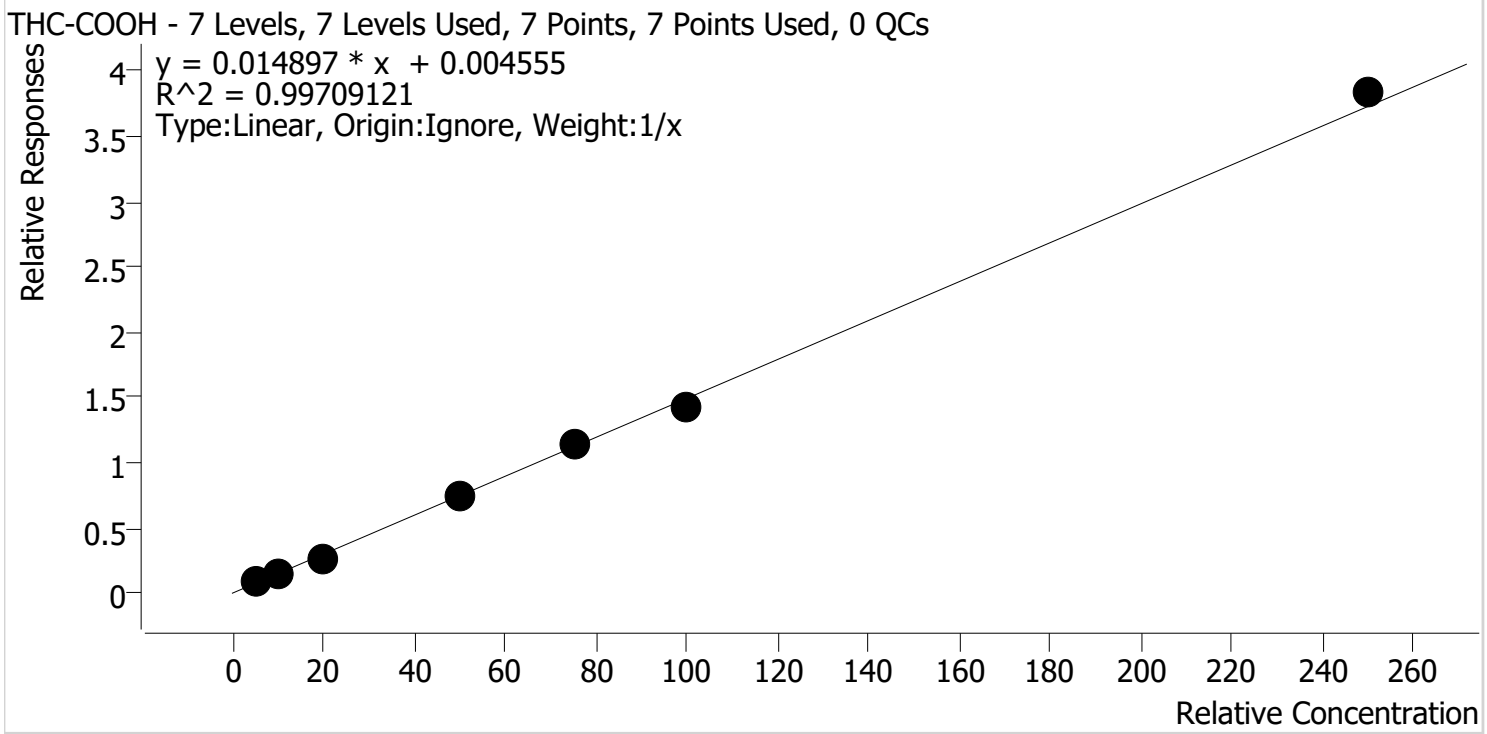
Sample	Level	Enabled	Expected Concentration	Final Concentration	Accuracy
MJ Cal 1	1	✓	1.0	1.2	119.1
MJ Cal 2	2	✓	3.0	2.9	96.6
MJ Cal 3	3	✓	5.0	4.4	87.7
MJ Cal 4	4	✓	10.0	9.8	97.6
MJ Cal 5	5	✓	25.0	24.7	98.8
MJ Cal 6	6	✓	50.0	49.2	98.4
MJ Cal 7	7	✓	100.0	101.9	101.9

TS



AM #26 Cannabinoids Screen Calibration Curve Report

Batch results D:\MassHunter\Data\2021\AM 25-26\120121 AM 25 26 TS\QuantResults\AM 26 TS.batch.bin
Last Cal. Update 12/2/2021 4:00 PM
Analyst Name ISP\datastor
Analyte THC-COOH **Internal Standard** THC-COOH-D9



Sample	Level	Enabled	Expected Concentration	Final Concentration	Accuracy
MJ Cal 1	1	✓	5.0	6.2	124.1
MJ Cal 2	2	✓	10.0	8.8	88.0
MJ Cal 3	3	✓	20.0	18.0	90.2
MJ Cal 4	4	✓	50.0	49.8	99.5
MJ Cal 5	5	✓	75.0	75.5	100.7
MJ Cal 6	6	✓	100.0	94.6	94.6
MJ Cal 7	7	✓	250.0	257.1	102.8

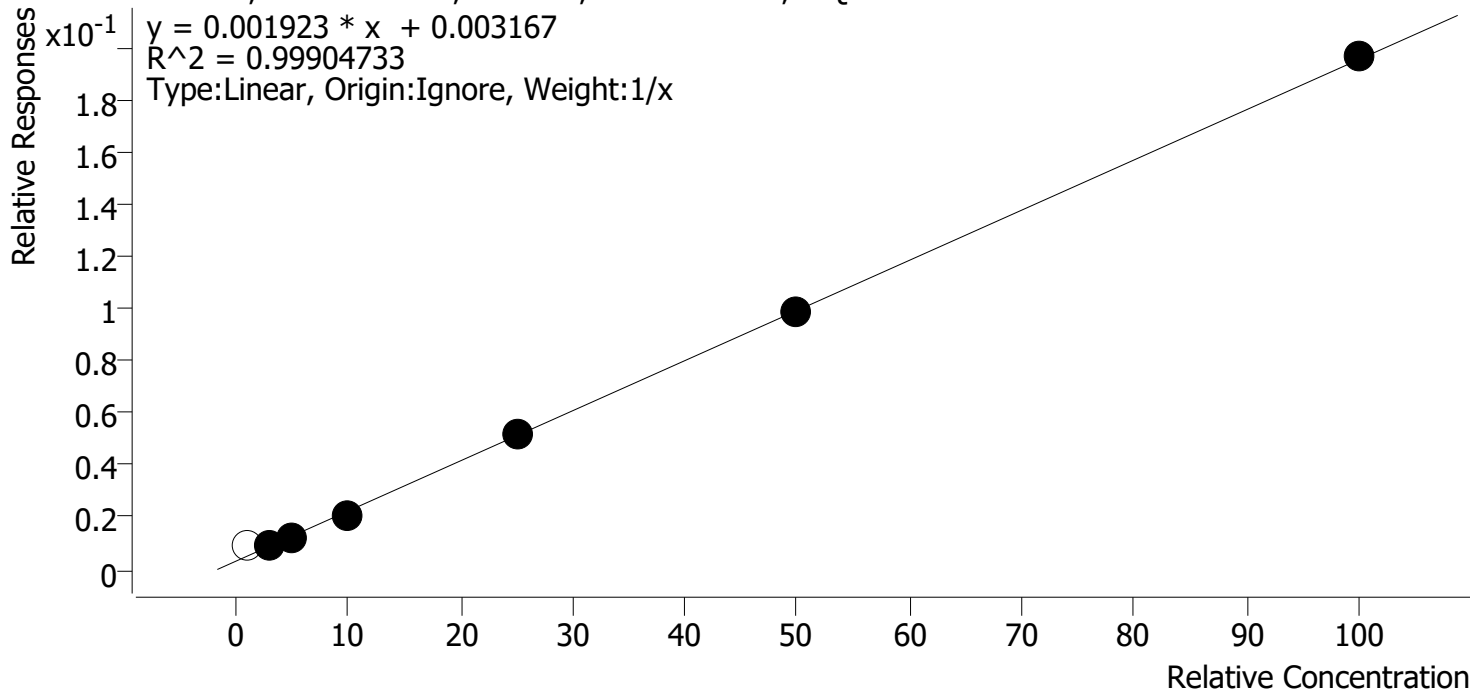
TS



AM #26 Cannabinoids Screen Calibration Curve Report

Batch results D:\MassHunter\Data\2021\AM 25-26\120121 AM 25 26 TS\QuantResults\AM 26 TS.batch.bin
Last Cal. Update 12/2/2021 4:00 PM
Analyst Name ISP\datastor
Analyte THC-OH **Internal Standard** THC-OH-D3

THC-OH - 7 Levels, 6 Levels Used, 7 Points, 6 Points Used, 0 QCs



Sample	Level	Enabled	Expected Concentration	Final Concentration	Accuracy
MJ Cal 1	1	x	1.0	3.4	338.3
MJ Cal 2	2	✓	3.0	3.3	109.8
MJ Cal 3	3	✓	5.0	4.9	98.9
MJ Cal 4	4	✓	10.0	9.0	89.9
MJ Cal 5	5	✓	25.0	25.2	100.8
MJ Cal 6	6	✓	50.0	50.0	100.0
MJ Cal 7	7	✓	100.0	100.6	100.6

TS

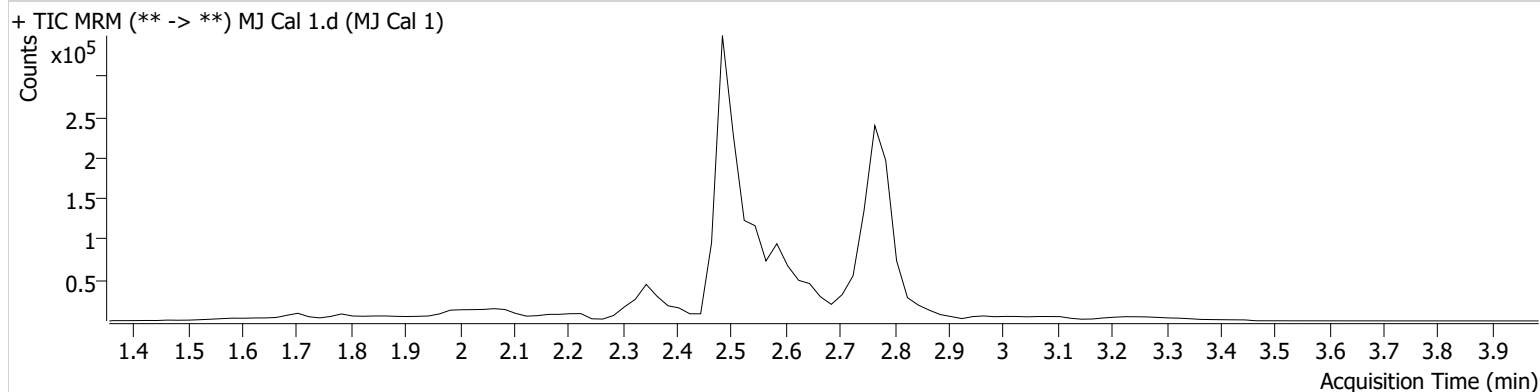


AM #26 Cannabinoids Screen Results

Batch results D:\MassHunter\Data\2021\AM 25-26\120121 AM 25 26 TS\QuantResults\AM 26 TS.batch.bin
Calibration Last Update 12/2/2021 4:00:26 PM

Instrument	Falco (069901)	Data File	MJ Cal 1.d
Type	Cal	Sample	MJ Cal 1
Acq. Method	AM 26 THCS.m	Operator	Tamara Salazar
Sample Position	P5-A1	Comment	
Injection Volume	10		
Acq. Date-Time	12/1/2021 3:47:23 PM		

Sample Chromatogram



Name	RT	Resp.	ISTD Resp.	Final Conc.	
THC	2.819	439	51412	1.1906 ng/ml	Low
THC-COOH	2.547	15814	162983	6.2073 ng/ml	
THC-OH	2.514	5848	604607	3.3830 ng/ml	

TS



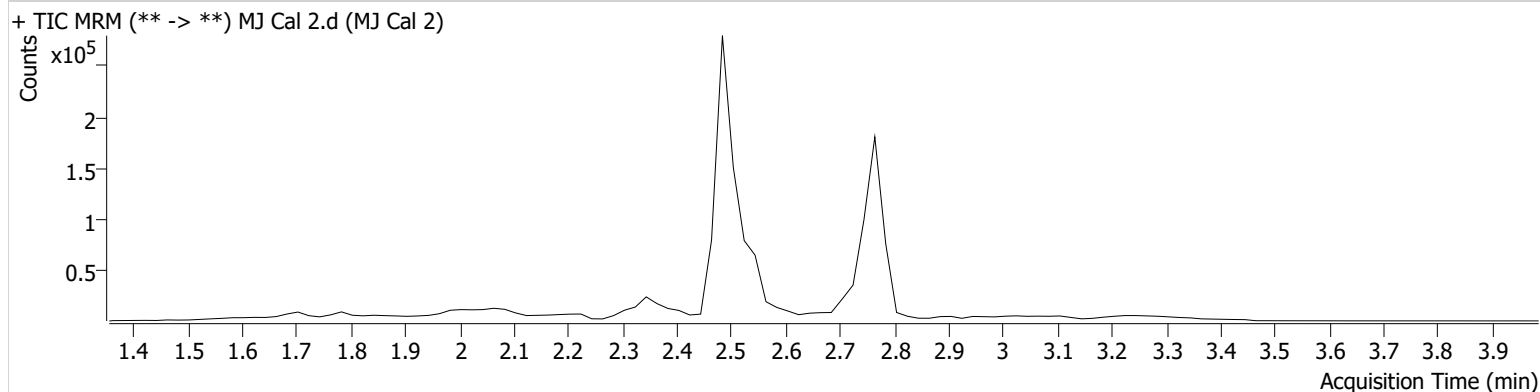
AM #26 Cannabinoids Screen Results

Batch results D:\MassHunter\Data\2021\AM 25-26\120121 AM 25 26 TS\QuantResults\AM 26 TS.batch.bin
Calibration Last Update 12/2/2021 4:00:26 PM

Instrument	Falco (069901)	Data File	MJ Cal 2.d
Type	Cal	Sample	MJ Cal 2
Acq. Method	AM 26 THCS.m	Operator	Tamara Salazar
Sample Position	P5-B1	Comment	
Injection Volume	10		
Acq. Date-Time	12/1/2021 3:54:06 PM		

Sample Info.

Sample Chromatogram



Name	RT	Resp.	ISTD Resp.	Final Conc.	
THC	2.819	97	4585	2.8979 ng/ml	Low
THC-COOH	2.547	15311	112912	8.7964 ng/ml	
THC-OH	2.494	4963	522328	3.2944 ng/ml	

TS

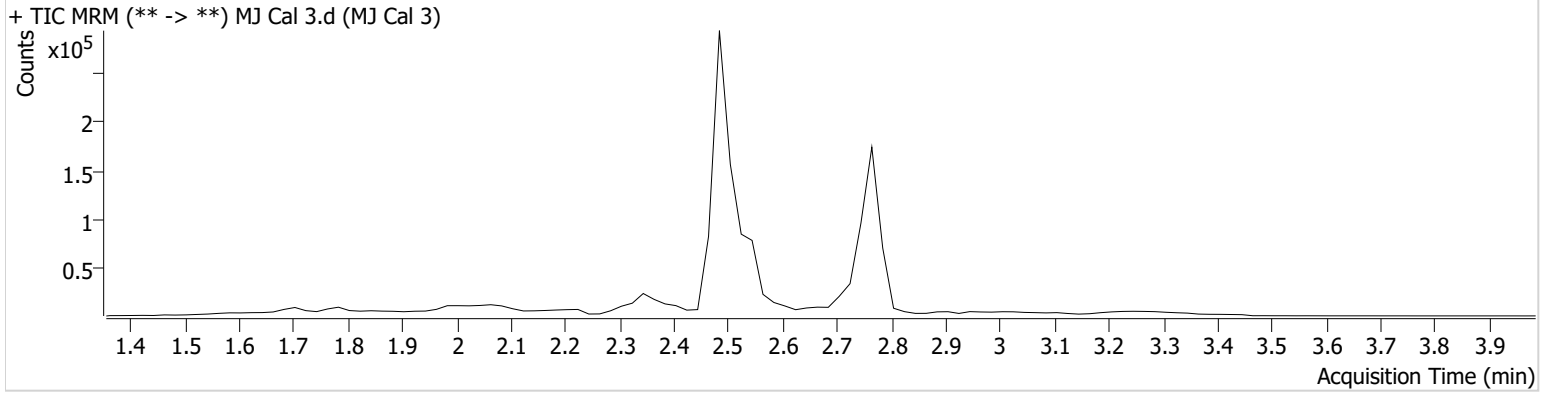


AM #26 Cannabinoids Screen Results

Batch results D:\MassHunter\Data\2021\AM 25-26\120121 AM 25 26 TS\QuantResults\AM 26 TS.batch.bin
Calibration Last Update 12/2/2021 4:00:26 PM

Instrument	Falco (069901)	Data File	MJ Cal 3.d
Type	Cal	Sample	MJ Cal 3
Acq. Method	AM 26 THCS.m	Operator	Tamara Salazar
Sample Position	P5-C1	Comment	
Injection Volume	10		
Acq. Date-Time	12/1/2021 4:00:40 PM		

Sample Chromatogram



Name	RT	Resp.	ISTD Resp.	Final Conc.
THC	2.839	149	4643	4.3875 ng/ml
THC-COOH	2.547	29293	107133	18.0486 ng/ml
THC-OH	2.494	6694	528150	4.9448 ng/ml

TS

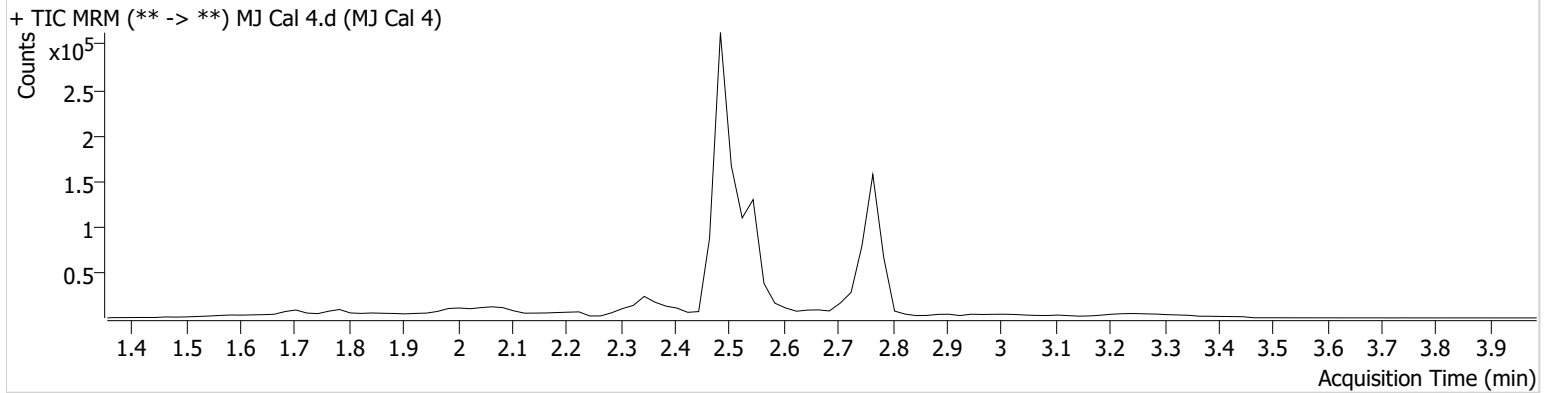


AM #26 Cannabinoids Screen Results

Batch results D:\MassHunter\Data\2021\AM 25-26\120121 AM 25 26 TS\QuantResults\AM 26 TS.batch.bin
Calibration Last Update 12/2/2021 4:00:26 PM

Instrument	Falco (069901)	Data File	MJ Cal 4.d
Type	Cal	Sample	MJ Cal 4
Acq. Method	AM 26 THCS.m	Operator	Tamara Salazar
Sample Position	P5-D1	Comment	
Injection Volume	10		
Acq. Date-Time	12/1/2021 4:07:13 PM		

Sample Chromatogram



Name	RT	Resp.	ISTD Resp.	Final Conc.
THC	2.819	326	4535	9.7557 ng/ml
THC-COOH	2.547	74275	99582	49.7617 ng/ml
THC-OH	2.494	10802	527951	8.9940 ng/ml

TS

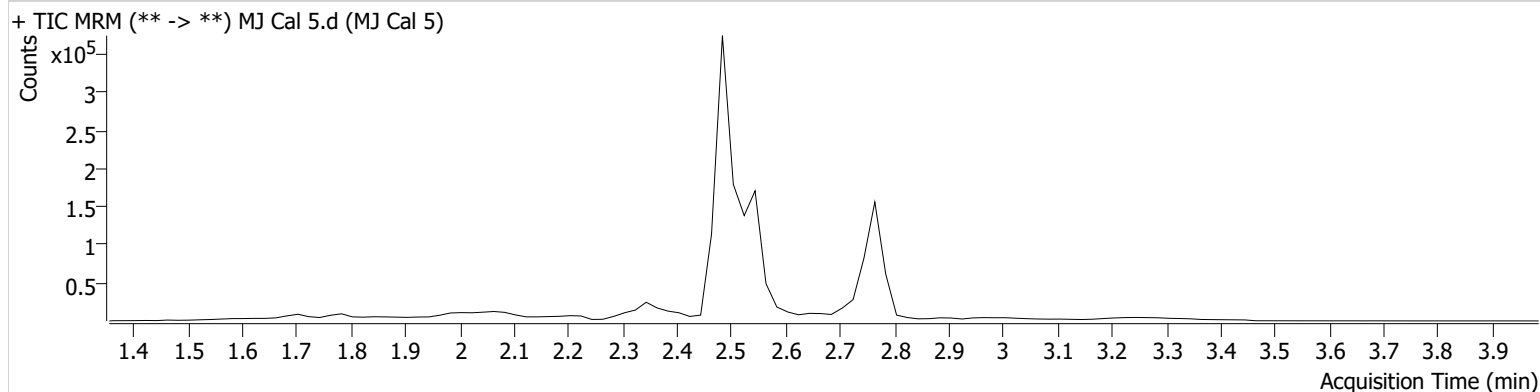


AM #26 Cannabinoids Screen Results

Batch results D:\MassHunter\Data\2021\AM 25-26\120121 AM 25 26 TS\QuantResults\AM 26 TS.batch.bin
Calibration Last Update 12/2/2021 4:00:26 PM

Instrument	Falco (069901)	Data File	MJ Cal 5.d
Type	Cal	Sample	MJ Cal 5
Acq. Method	AM 26 THCS.m	Operator	Tamara Salazar
Sample Position	P5-E1	Comment	
Injection Volume	10		
Acq. Date-Time	12/1/2021 4:13:47 PM		
Sample Info.			

Sample Chromatogram



Name	RT	Resp.	ISTD Resp.	Final Conc.
THC	2.819	836	4589	24.6911 ng/ml
THC-COOH	2.547	112737	99765	75.5486 ng/ml
THC-OH	2.494	27084	524899	25.1880 ng/ml

TS

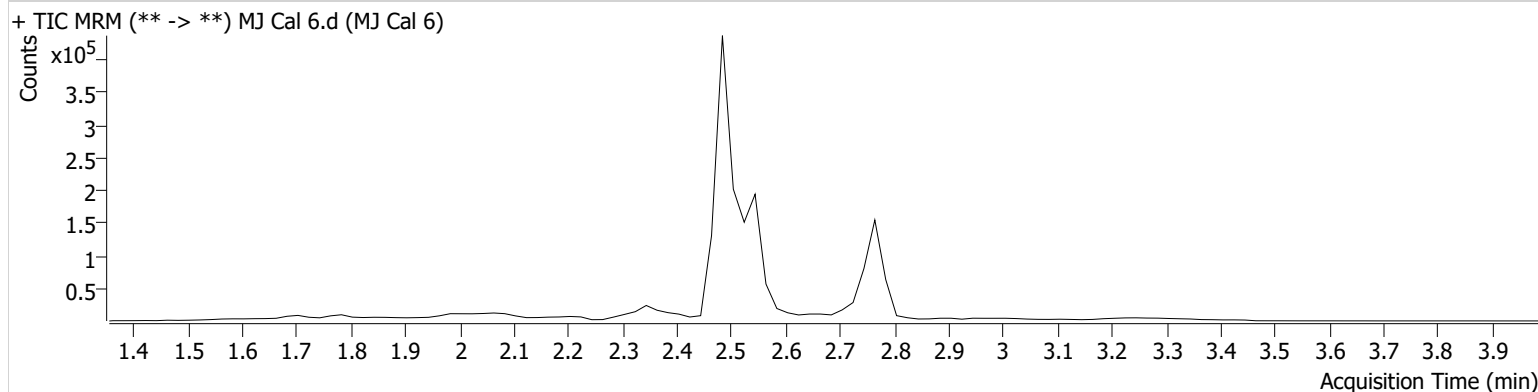


AM #26 Cannabinoids Screen Results

Batch results D:\MassHunter\Data\2021\AM 25-26\120121 AM 25 26 TS\QuantResults\AM 26 TS.batch.bin
Calibration Last Update 12/2/2021 4:00:26 PM

Instrument	Falco (069901)	Data File	MJ Cal 6.d
Type	Cal	Sample	MJ Cal 6
Acq. Method	AM 26 THCS.m	Operator	Tamara Salazar
Sample Position	P5-F1	Comment	
Injection Volume	10		
Acq. Date-Time	12/1/2021 4:20:21 PM		

Sample Chromatogram



Name	RT	Resp.	ISTD Resp.	Final Conc.
THC	2.819	1524	4193	49.1969 ng/ml
THC-COOH	2.547	134248	94992	94.5611 ng/ml
THC-OH	2.494	48028	483441	50.0217 ng/ml

TS

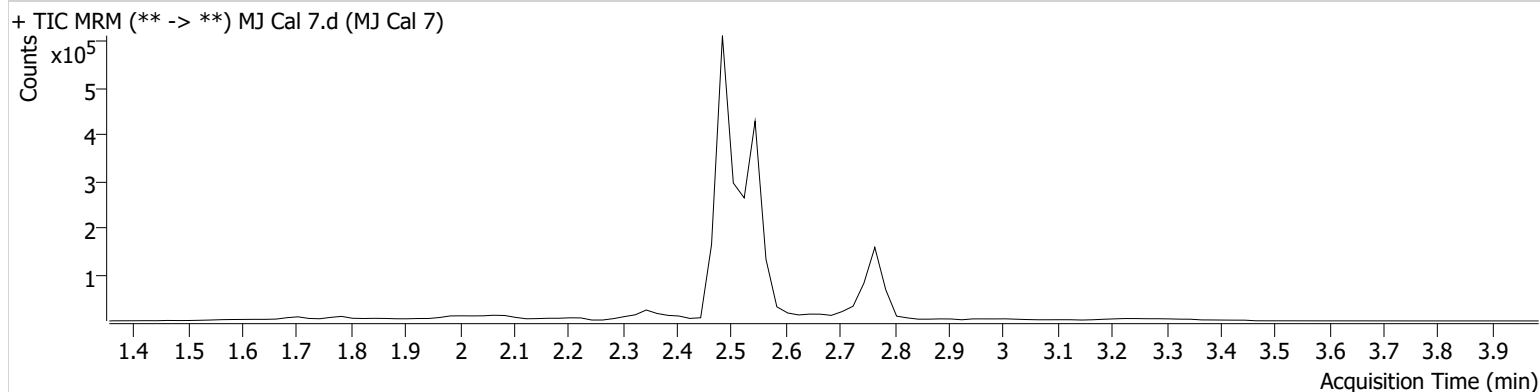


AM #26 Cannabinoids Screen Results

Batch results D:\MassHunter\Data\2021\AM 25-26\120121 AM 25 26 TS\QuantResults\AM 26 TS.batch.bin
Calibration Last Update 12/2/2021 4:00:26 PM

Instrument	Falco (069901)	Data File	MJ Cal 7.d
Type	Cal	Sample	MJ Cal 7
Acq. Method	AM 26 THCS.m	Operator	Tamara Salazar
Sample Position	P5-G1	Comment	
Injection Volume	10		
Acq. Date-Time	12/1/2021 4:26:55 PM		

Sample Chromatogram



Name	RT	Resp.	ISTD Resp.	Final Conc.
THC	2.819	3271	4344	101.8803 ng/ml
THC-COOH	2.547	334015	87113	257.0762 ng/ml
THC-OH	2.494	94689	481841	100.5572 ng/ml